

Digital Photogrammetric System

PHOTOMOD

Version 7.4

**EGM2008 Geoid
installation**

Table of Contents

1. Introduction 3
2. Installation 3
3. Using EGM2008 geoid in the system 5

1. Introduction

The present document is a brief instruction to EGM2008 geoid installation.

2. Installation

Requirements to install EGM2008 geoid:

- pre-installation of the system PHOTOMOD;
- EGM2008 geoid program files require 600 MB of free hard disk space for installation.

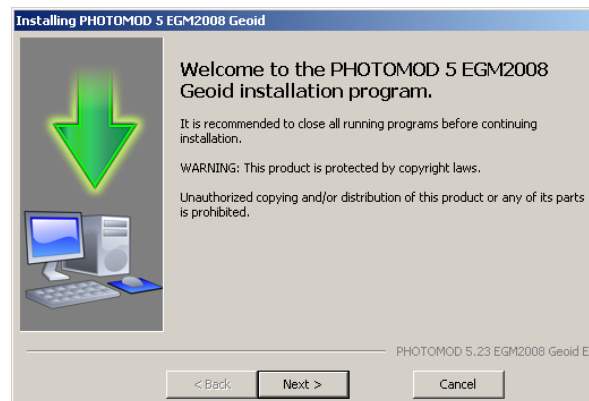
To install EGM2008 geoid, download and run the EGM2008_inst_Eng.exe file. The **Installing PHOTOMOD 5 EGM2008 Geoid** window opens.

The EGM2008 geoid installation process consists of a sequence of steps. Each of them is accompanied by dialogue windows with the appropriate instructions. If you cancel the installation at any step, the program and data files installed to that moment are not deleted. Still, to complete the installation you need to run the EGM2008_inst_Eng.exe file again and to pass through all the steps of the installation.

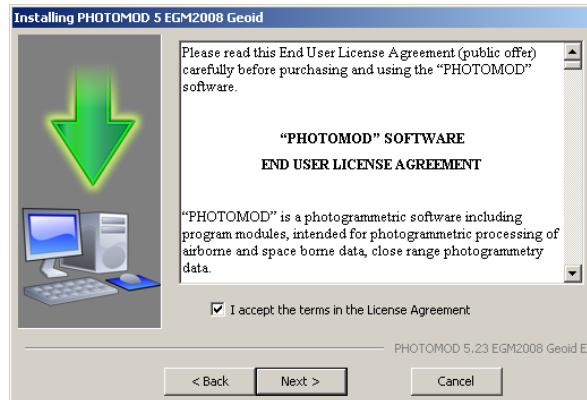
The EGM2008 geoid installation process consists of the following stages:

Preparation stage

Step 1: Read the welcome and warning messages. Click the **Next** button.



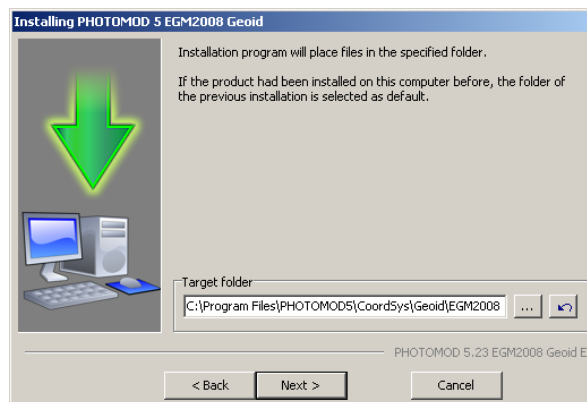
Step 2: Read the license agreement. If you accept the terms of the license agreement, set the **I accept the terms in the License Agreement** check box and click the **Next** button.



Step 3: Choose a target folder to install the EGM2008 geoid program files. Click the **Next** button.

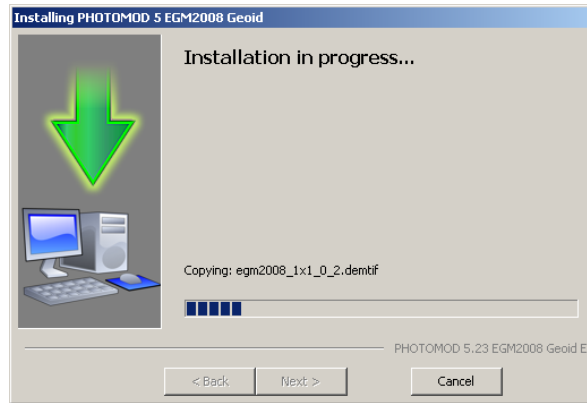


It is necessary to place the target folder for the EGM2008 geoid program files in the PHOTOMOD system folder, for example, C:\Program Files\PHOTOMOD5\CoordSys\Geoid\EGM2008 for the professional system version or C:\Program Files\PHOTOMOD5 Lite\CoordSys\Geoid\EGM2008 for the Lite system version.

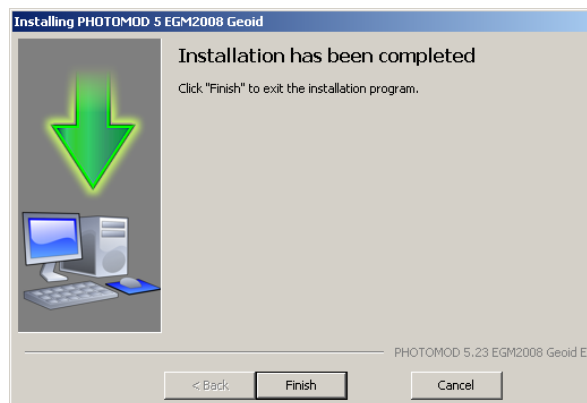


File copying stage


Step 6: Click the **Next** button to start copying program files.



Step 7: After the installation, click the **Finish** button.



3. Using EGM2008 geoid in the system

To use EGM2008 geoid in the system, click the  button that allows to choose geoids from a list or cancel the using of the geoid.

