

Digital Photogrammetric System

# PHOTOMOD

Version 7.5

## EGM2008 Geoid installation

**Table of Contents**

1. Introduction ..... 3

2. Installation ..... 3

3. Using EGM2008 geoid in the system ..... 6

## 1. Introduction

The present document is a brief instruction to **EGM2008** geoid installation.

## 2. Installation

Requirements to install **EGM2008** geoid:

- pre-installation of the *PHOTOMOD*, *PHOTOMOD Lite*, *PHOTOMOD UAS*, *PHOTOMOD Conveyor* or *PHOTOMOD AutoUAS* system;
- **EGM2008** geoid program files require 600 MB of free hard disk space for installation.

To install **EGM2008** geoid, download and run the EGM2008\_inst\_Eng.exe file. The **Installing PHOTOMOD 5 EGM2008 Geoid** window opens.



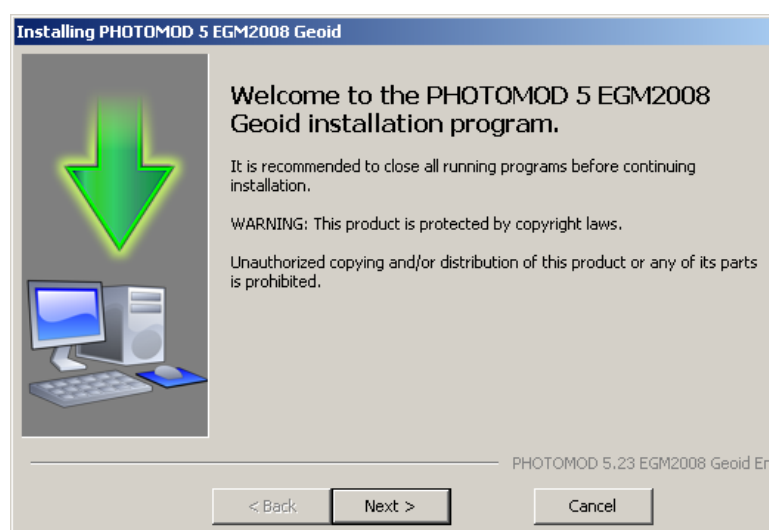
The file is available on official *Racurs* company web-site [www.racurs.ru](http://www.racurs.ru).

The **EGM2008** geoid installation process consists of a sequence of steps. Each of them is accompanied by dialogue windows with the appropriate instructions. If you cancel the installation at any step, the program and data files installed to that moment are not deleted. Still, to complete the installation you need to run the EGM2008\_inst\_Eng.exe file again and to pass through all the steps of the installation.

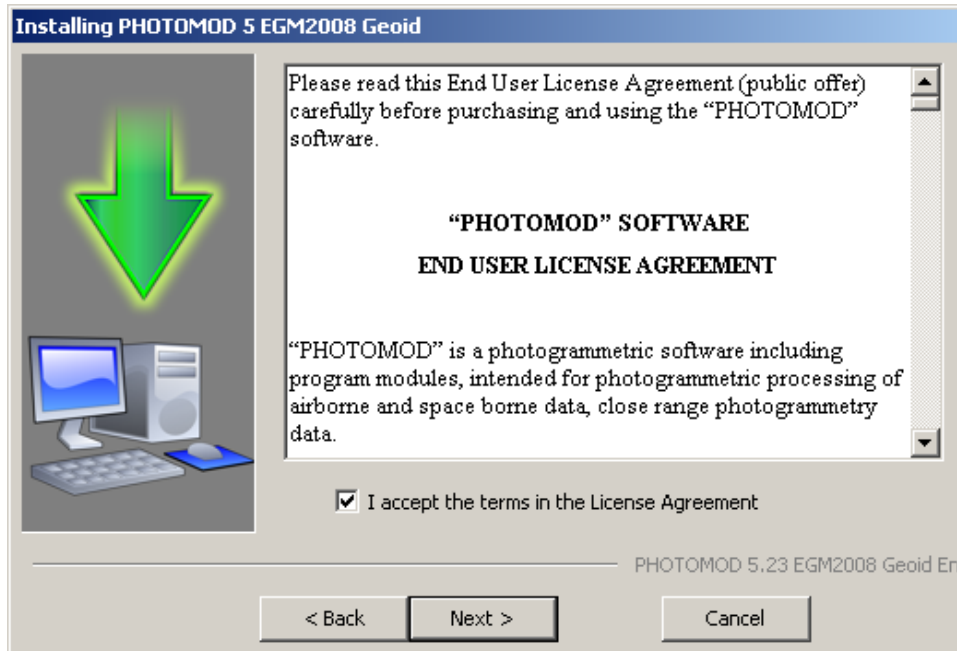
The **EGM2008** geoid installation process consists of the following stages:

### Preparation stage

Step 1: Read the welcome and warning messages. Click the **Next** button.



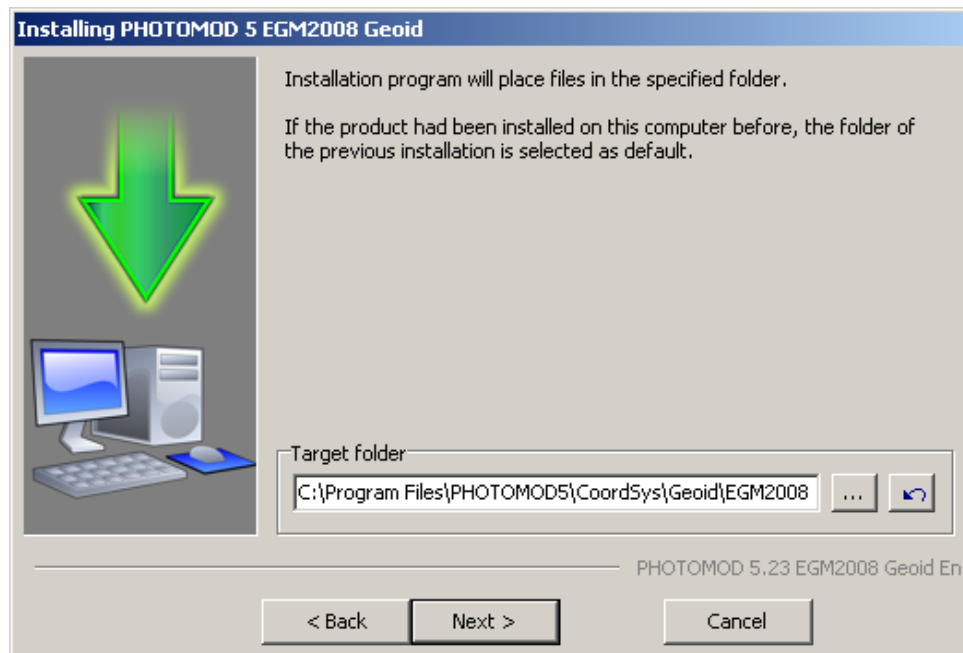
Step 2: Read the license agreement. If you accept the terms of the license agreement, set the **I accept the terms in the License Agreement** check box and click the **Next** button.



Step 3: Choose a target folder to install the **EGM2008** geoid program files. It is necessary to place the target folder for the **EGM2008** geoid program files in the *PHOTOMOD* system folder, for example:

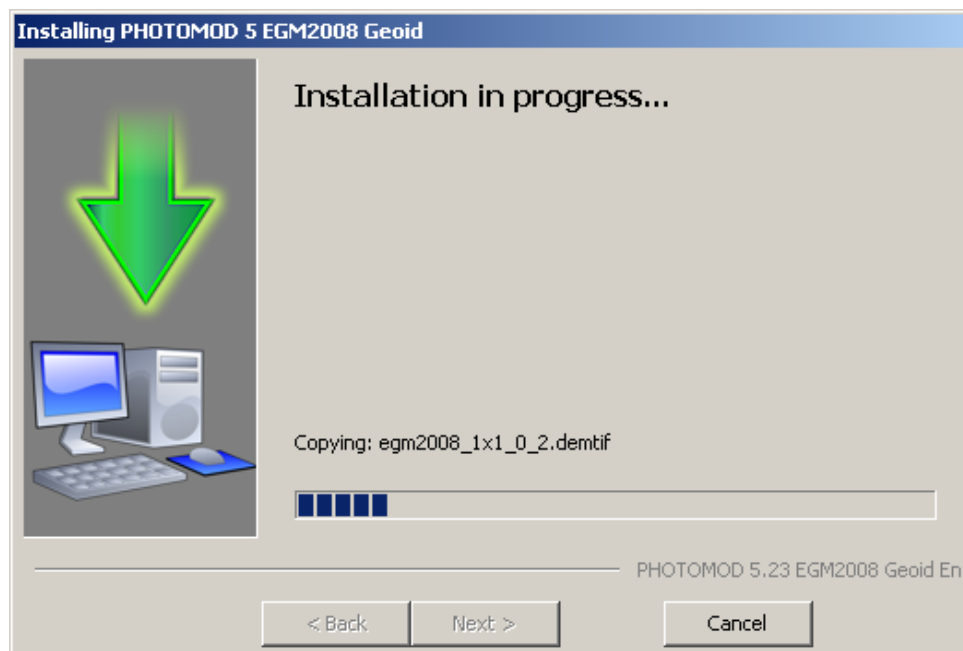
- *C:\Program Files\PHOTOMOD\_7\_x64\CoordSys\Geoid* – for the professional system version;
- *C:\Program Files\PHOTOMOD\_7\_Lite\_x64\CoordSys\Geoid* – for the Lite system version;
- *C:\Program Files\PHOTOMOD\_7\_UAS\_x64\CoordSys\Geoid* – for *PHOTOMOD UAS* system;
- *C:\Program Files\PHOTOMOD\_Conveyor\_7\_x64\CoordSys\Geoid* – for *PHOTOMOD Conveyor* system;
- *C:\Program Files\PHOTOMOD\_AutoUAS\_7\_x64\CoordSys\Geoid* – for *PHOTOMOD AutoUAS* system.

Click the **Next** button.

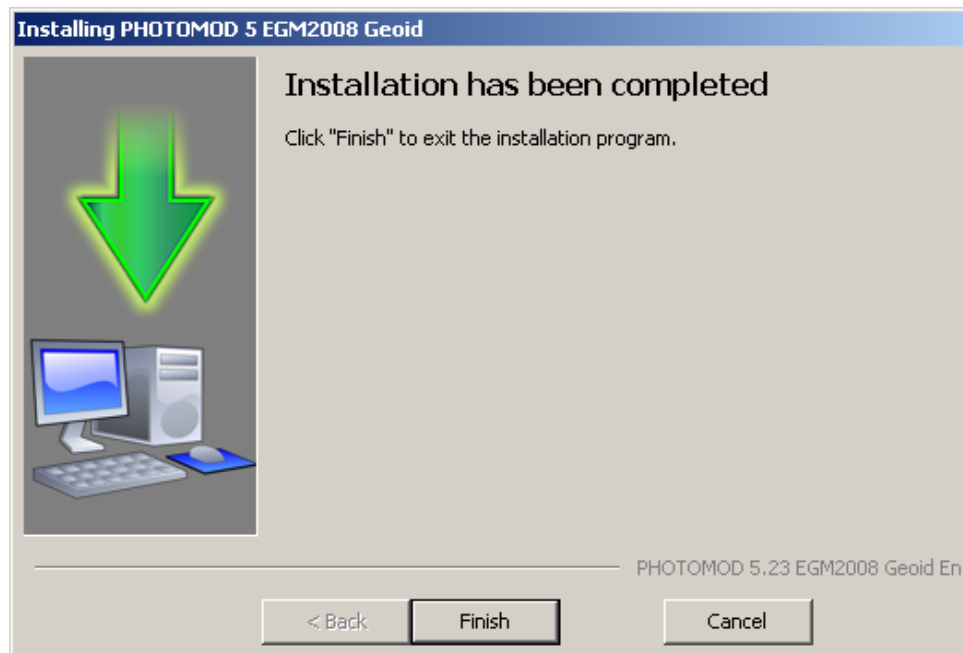


### File copying stage


Step 6: Click the **Next** button to start copying program files.



Step 7: After the installation, click the **Finish** button.



### 3. Using EGM2008 geoid in the system

To use **EGM2008** geoid in the system, click the  button that allows to choose geoids from a list or cancel the using of the geoid.

