

Digital Photogrammetric System

PHOTOMOD

Version 6.2

USER MANUAL

Network hardlock key
configuration

Network hardlock key configuration

A network version of the Sentinel Hard Lock Key is intended to protect the system and data, and allows to use network (or floating) licences.

When using multiple hard lock keys in a LAN, it is possible that start over of the system's modules on a separate computer could be slow. It is also possible that the hard lock key is inaccessible. In such a case it is recommended to change the hard lock key settings.

To set access to a hard lock key or to speed up start of the system modules, perform the following actions:



To set access to a hard lock key it is necessary to possess administrator's privileges.

1. Open a browser on a computer where a hard lock key is installed.
2. Input the following into browser address line `http://localhost:1947`. The **Sentinel Admin Control Center** window opens.

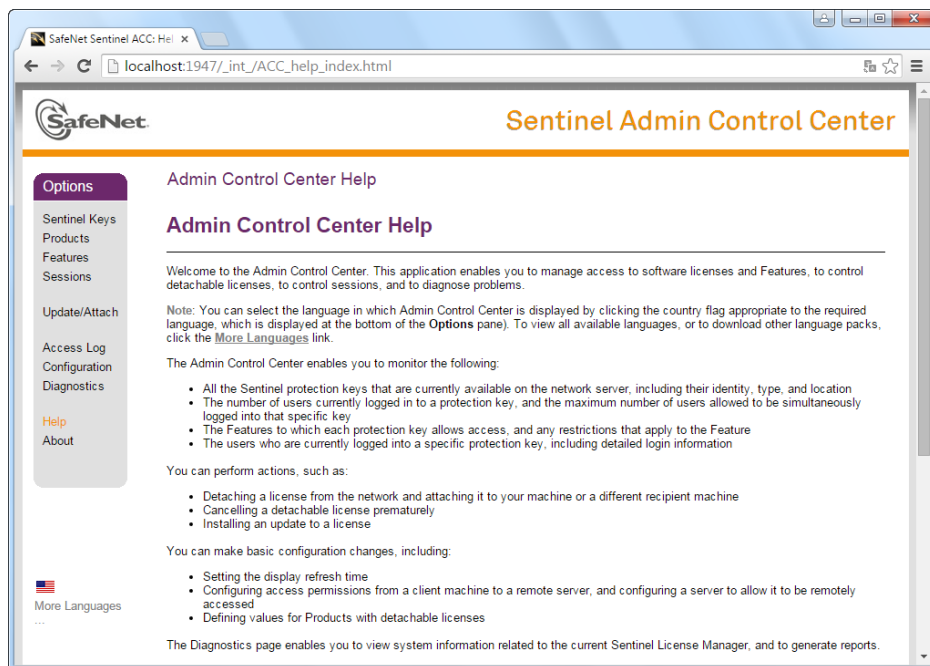


Fig. 1. Sentinel Admin Control Center

3. [optional] To obtain information about installed local hard lock keys, click **Sentinel Keys**. The table containing detailed information about hard lock keys opens.

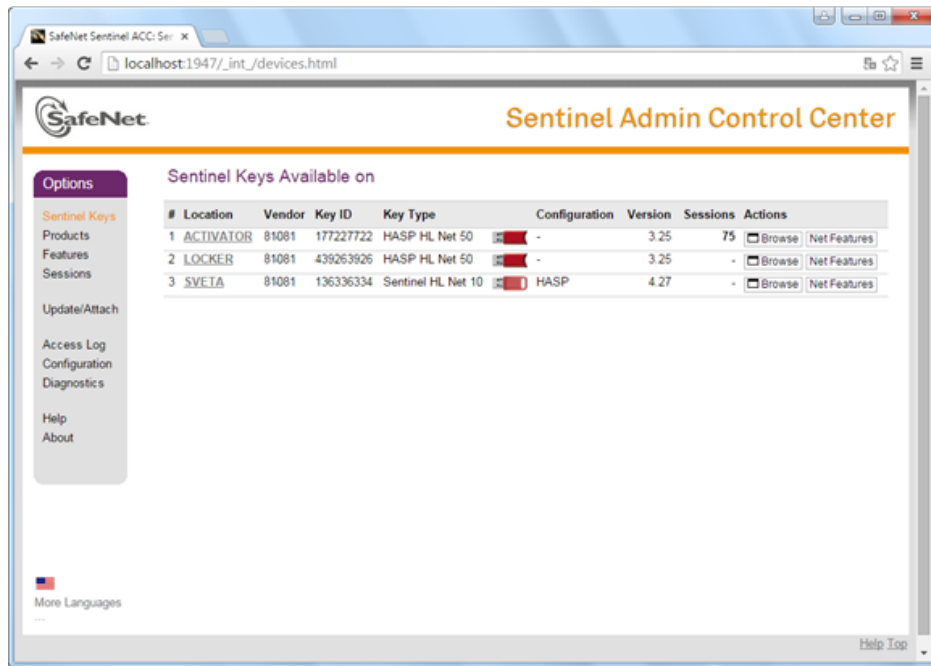


Fig. 2. Local Hard Lock Keys

4. Click **Configuration**. The **Basic Settings** tab of the **Configuration for Sentinel License Manager** window opens.
5. Select the **Access to Remote License Managers** tab.

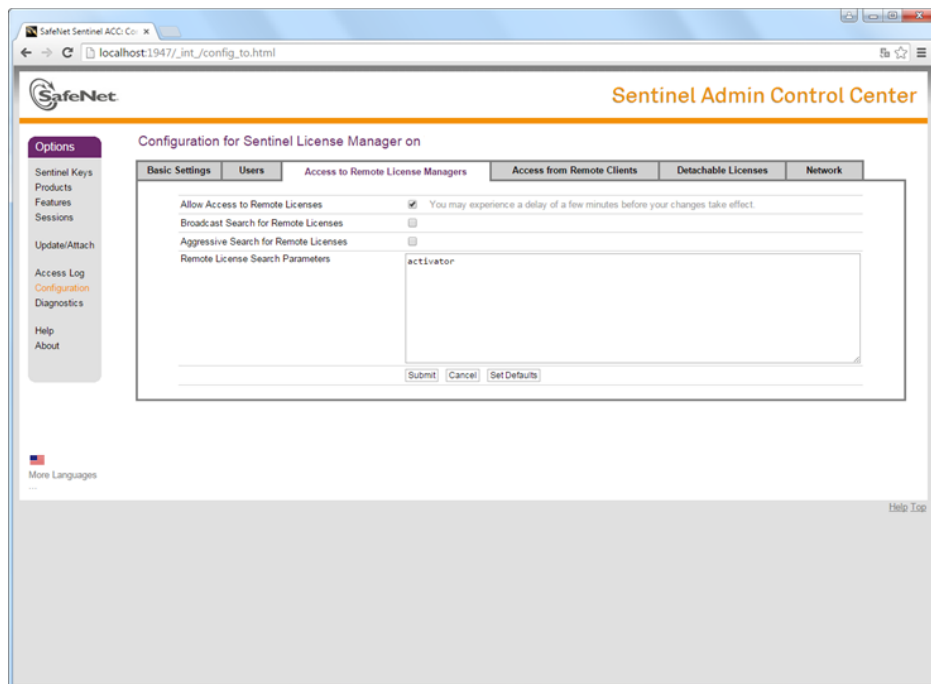


Fig. 3. Access configuration to remote license managers

6. Make sure that the **Allow Access to Remote Licenses** checkbox is set on.
7. Clear the **Broadcast Search for Remote Licenses** checkbox to turn off broadcast keys search.
8. Clear the **Aggressive Search for Remote Licenses** checkbox.
9. In the **Remote License Search Parameters** field input a computer network name (activator in the given example) where the hard lock key is installed.
10. Click the **Submit** button.



Settings save operation could take a few minutes.

11. Click **Sentinel Keys**. The table containing the hard lock key on the selected computer is displayed.

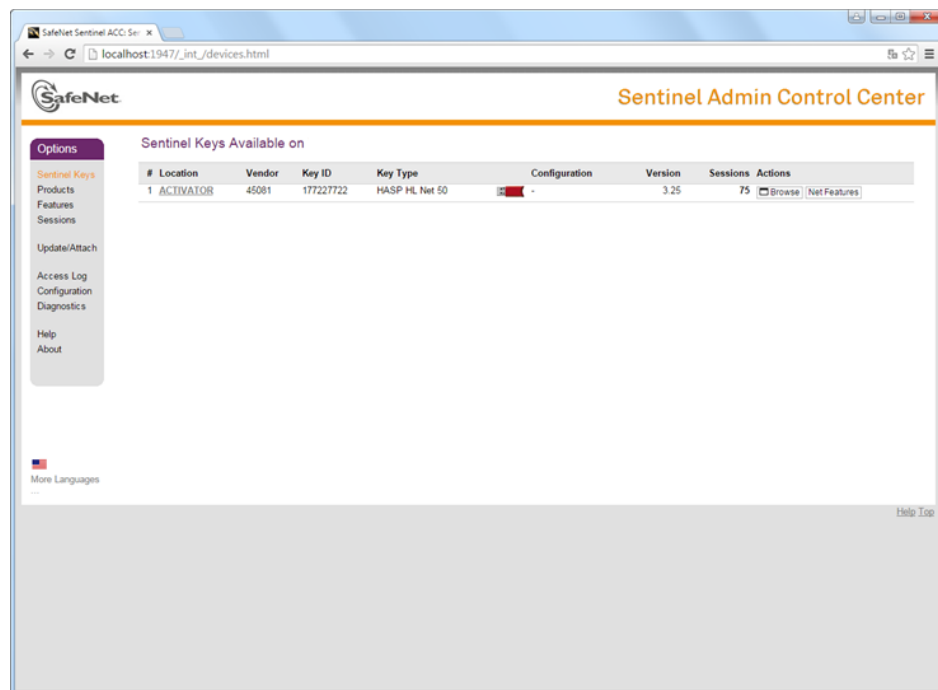



Fig. 4. Hard Lock Key on selected computer

12. Create the PhConsts50.dll.host file. Open the file in any text editor and input computer network name to the last row (activator in the given example).
13. Put the PhConsts50.dll.host file to *PHOTOMOD_6_x64* installation folder.
14. Create the nethasp.ini file. Input the following data using any text editor:

 Input computer network name to the last row (activator in the given example).

```
[NH_COMMON]
NH_TCPIP=Enabled
NH_IPX=Disabled
[NH_TCPIP]
NH_SESSION=8
NH_SEND_RCV=4
NH_TCPIP_METHOD=TCP
NH_USE_BROADCAST=Disabled
NH_SERVER_ADDR=ACTIVATOR
```

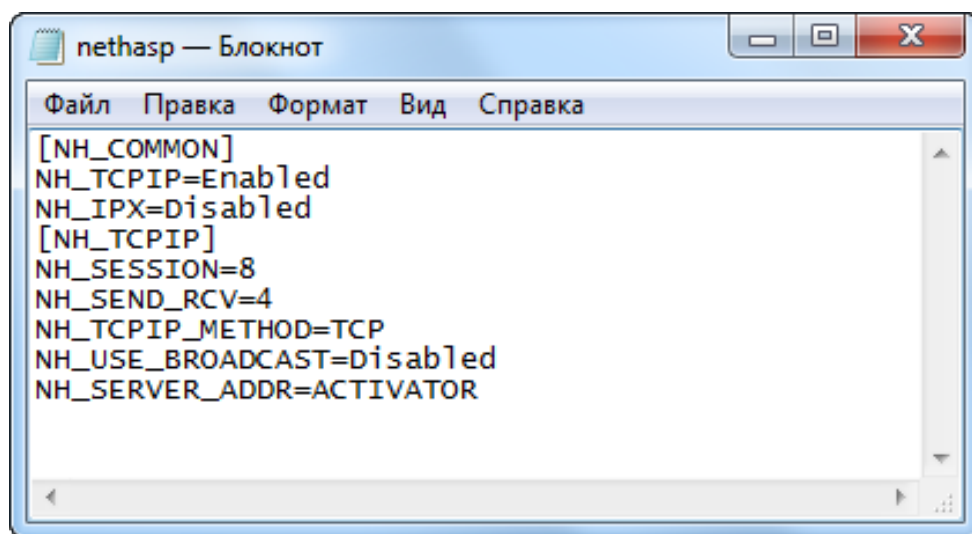


Fig. 5. Example of nethasp.ini file

15. Put the nethasp.ini file into Windows system folder (C:\Windows).