

# PHOTOMOD

## StereoMeasure

Forest valuation tools

Stereointerpretation

Stereomeasurement

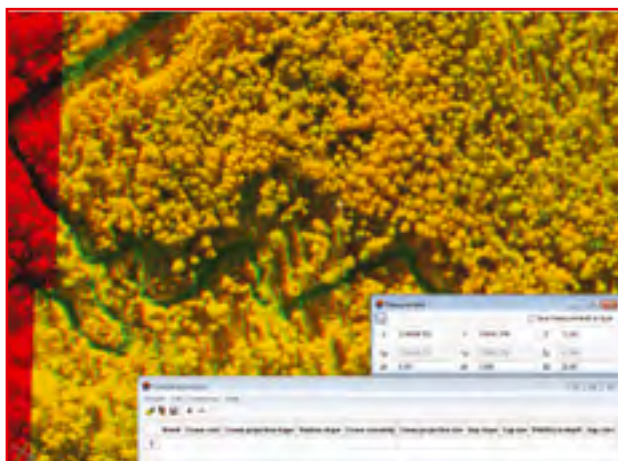
Stereovectorization





PHOTOMOD StereoMeasure — a toolset for solving problems of forest valuation: stereointerpretation and stereo-measurement of forest's characteristics, as well as stereovectorization of forest stands based on remote sensing data.

Existing PHOTOMOD projects and pairs of georeferenced orthorectified images (aerial and pushbroom scanner ones), having a mutual overlap are the input data for StereoMeasure module.



## Highlights

- Stereointerpretation of species composition based on the built-in tokens directory.
- Creation of report about statistical distribution of deciphering signs, depending on species of woods.
- Calculation of canopy density.
- Generation of quasi-stereopairs based on georeferenced orthorectified images having mutual overlap.
- Vectorization of objects in stereo with defining XY-plane, Z coordinates and unlimited number of attributes.
- Measurement of coordinates, lengths, heights and areas of objects in stereo.

## Automation and easy-to-use

- Automatic recalculation of vector objects areas after changing their configuration.
- Determination of colour and size of forest stands in interactive semi-automatic mode.
- Control of uniqueness and consistency of attribute suitable for fast display and editing of the founded errors.
- Use of existing and organization of – new directories of tokens, species and colours in order to fill in interpretation tabled faster.

StereoMeasure module can significantly extend the functionality of your local or network version of DPW PHOTOMOD.

Racurs provides unlimited technical support for its customers. Experienced software support specialists provide immediate professional help by phone, fax or e-mail.

Download Lite version of PHOTOMOD! The program is created to help familiarize with the systems features and functionality and allows you to perform test projects using your data.



Racurs  
Moscow, Russia  
+7 495 720 5127

<http://www.racurs.ru>  
[info@racurs.ru](mailto:info@racurs.ru)

