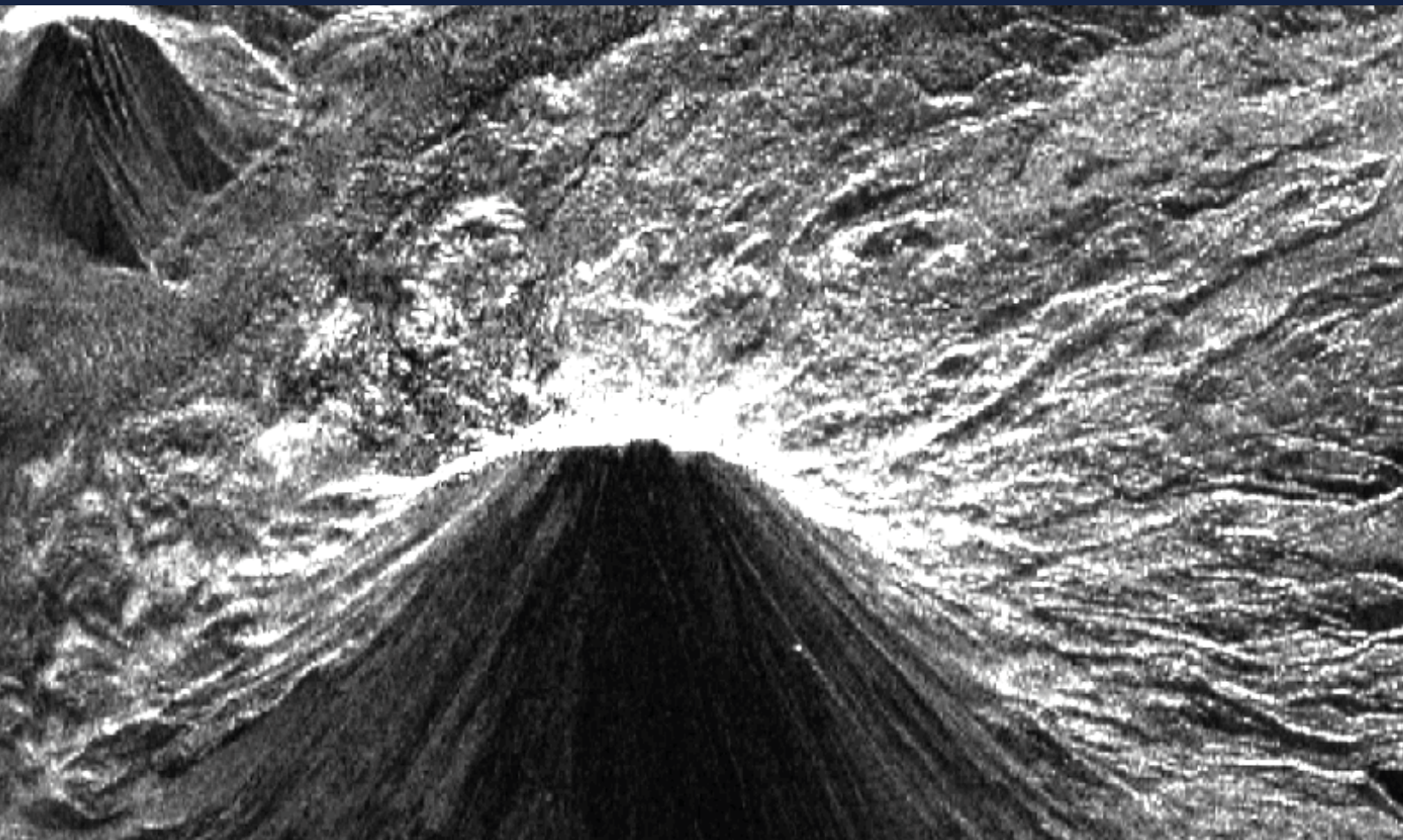




PHOTOMOD

Radar



PHOTOMOD Radar

The PHOTOMOD Radar software is intended for fullscale processing of Earth remote sensing data acquired by spaceborne radars with synthesized antenna aperture (SAR) such as Condor-FKA, KOMPSAT-5, Sentinel, ERS-1/2, Radarsat, GaoFen, ENVISAT ASAR, TerraSAR-X, ALOS, COSMO-SkyMed, etc., and generation secondary information products.

The fact that SAR is the active sensor makes possible reception of required measurements independently of time, day and weather conditions.

FUNCTIONALITY

- Full-scale processing of Earth remote sensing data acquired by spaceborne synthetic aperture radars
- Flexible modular architecture: you only buy what you need
- Wide range of supported SAR sensors
- Ease of use: you are guided step-by-step through all stages of project processing

FLEXIBLE MODULAR ARCHITECTURE

- Image enhancement
- Image analysis
- Radargrammetry
- Interferometry
- Marine applications
- Georeferencing utilities
- Quality estimation
- Object detection



GEOREFERENCING

Georeferencing is intended for precision mosaic building, image alignment, georeferencing, image stacking.

INTERFEROMETRY

InSAR/DInSAR processor has been developed as tool for interferogram modeling, detection of coherence changes, coherent coregistration.

RADARGRAMMETRY

Radargrammetry realizes the technique of geocoding, RPC geocoding, stereo processing, metadata editing.

IMAGE ENHANCEMENT

The software tool is intended to speckle noise reduction, wavelet filtering, apodization, multi-apodization.

IMAGE ANALYSIS

The software tool is intended to texture analysis, classification, polarimetry, edge detection.

OBJECT DETECTION

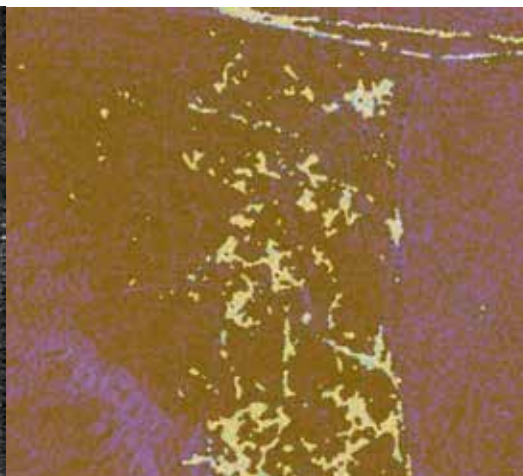
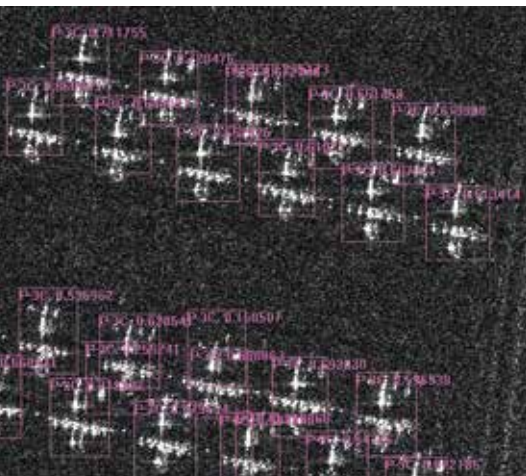
The software is designed to extract specific information from radar images. It provides users with a 3D model editor, template editor, template correlator, markup block, training sample generator, training block, detection block.

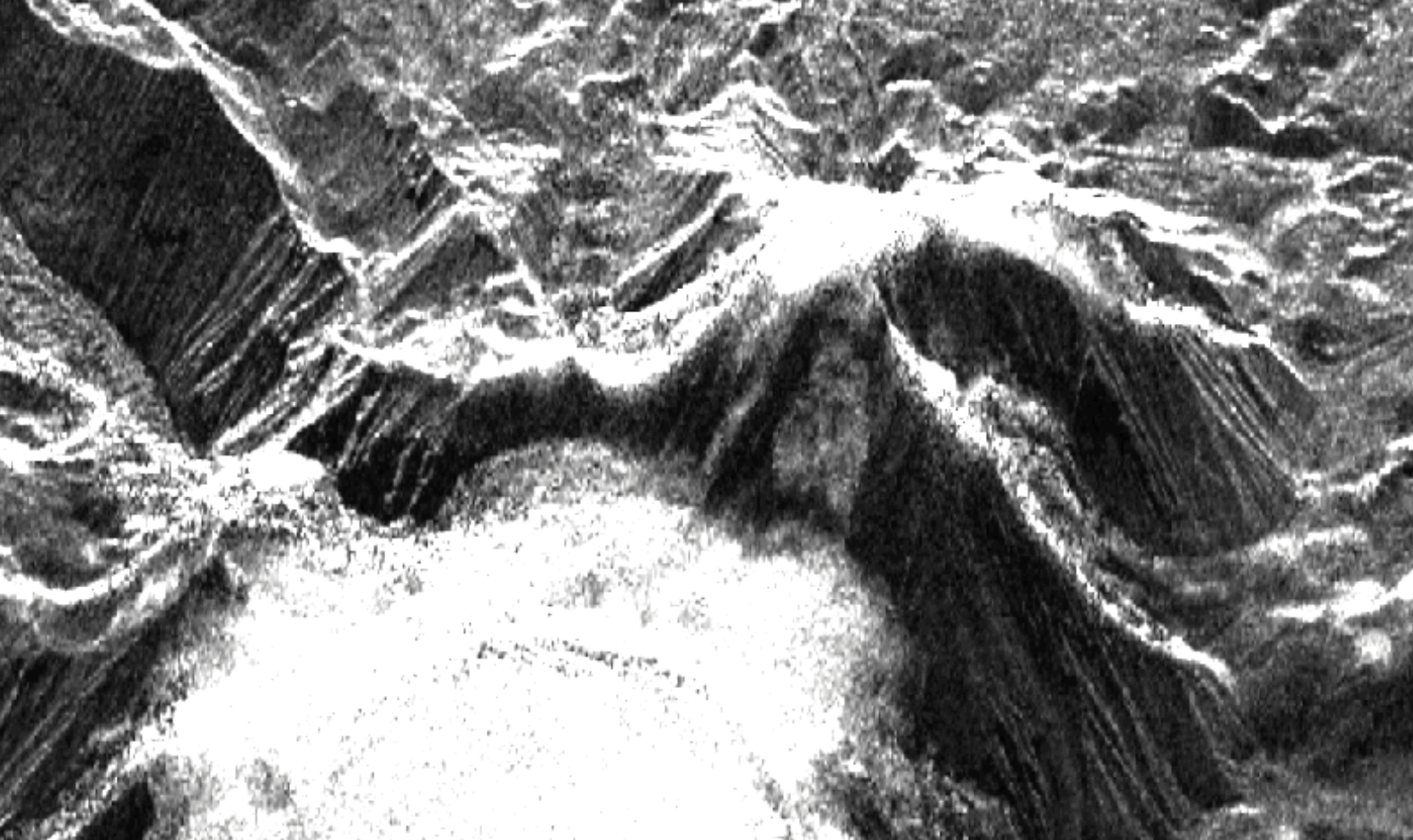
MARINE APPLICATIONS

Marine applications are designated for ship detection, oil spill detection, sea surface characterization.

QUALITY EVALUATION

The software tool is designed to impulse response analysis, geometry analysis, radiometry analysis, phase analysis, statistics analysis.





JSC Racurs

Yaroslavskaya Str., 13A, office 15

Moscow, Russia, 129366

info@racurs.ru

<https://racurs.ru>

+7 495 720-51-27